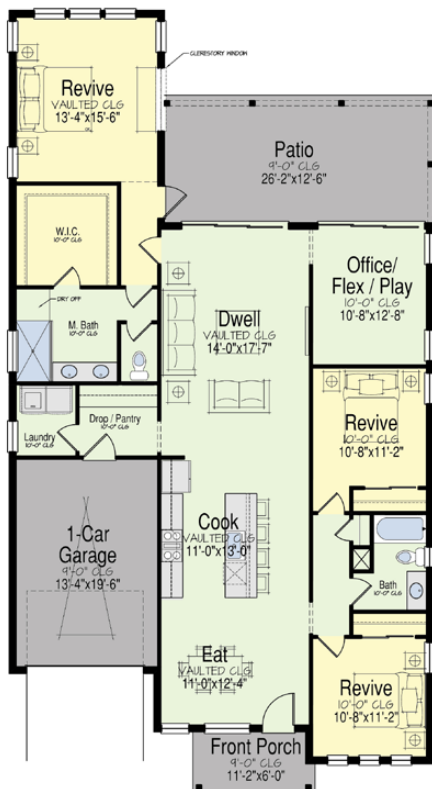
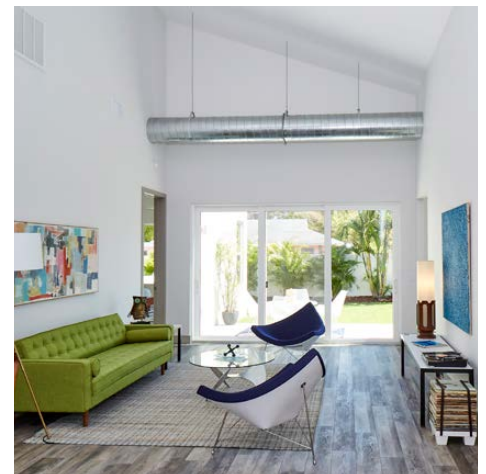


# KASPER MODERN

Client: James Kasper/Kasper Modern  
Location: St. Petersburg, FL  
Product Type: Single Family Homes  
Services: Architecture

Size: 1,880 sf to 2,100 sf  
3 Bedrooms  
2 Bathrooms  
1- and 2-Car Garages



This line of lot-specific infill homes features clean lines and angles and unique window patterns that achieve a modern look. Elevations use contemporary materials like concrete block and metal awnings alongside more traditional cladding, including natural wood siding and textured stucco. Several of these single-story plans make creative use of their shed roof angles by vaulting ceilings and using high, fixed glass to infuse interiors with more natural light. Homes offer one- and two-car garages, either front or rear load depending on lot orientation.

