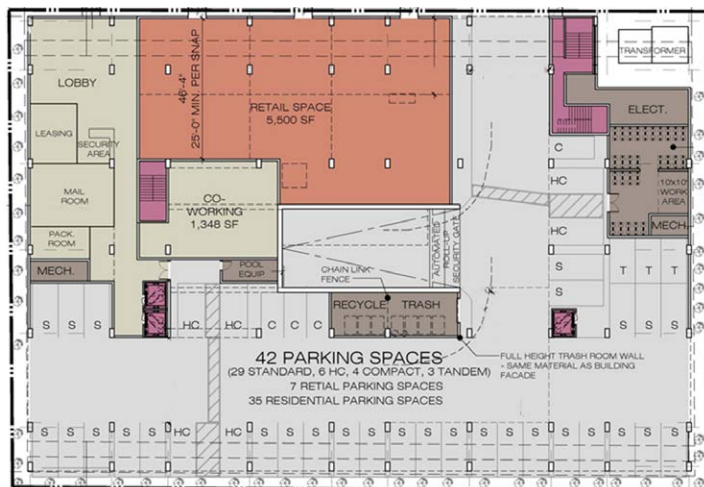
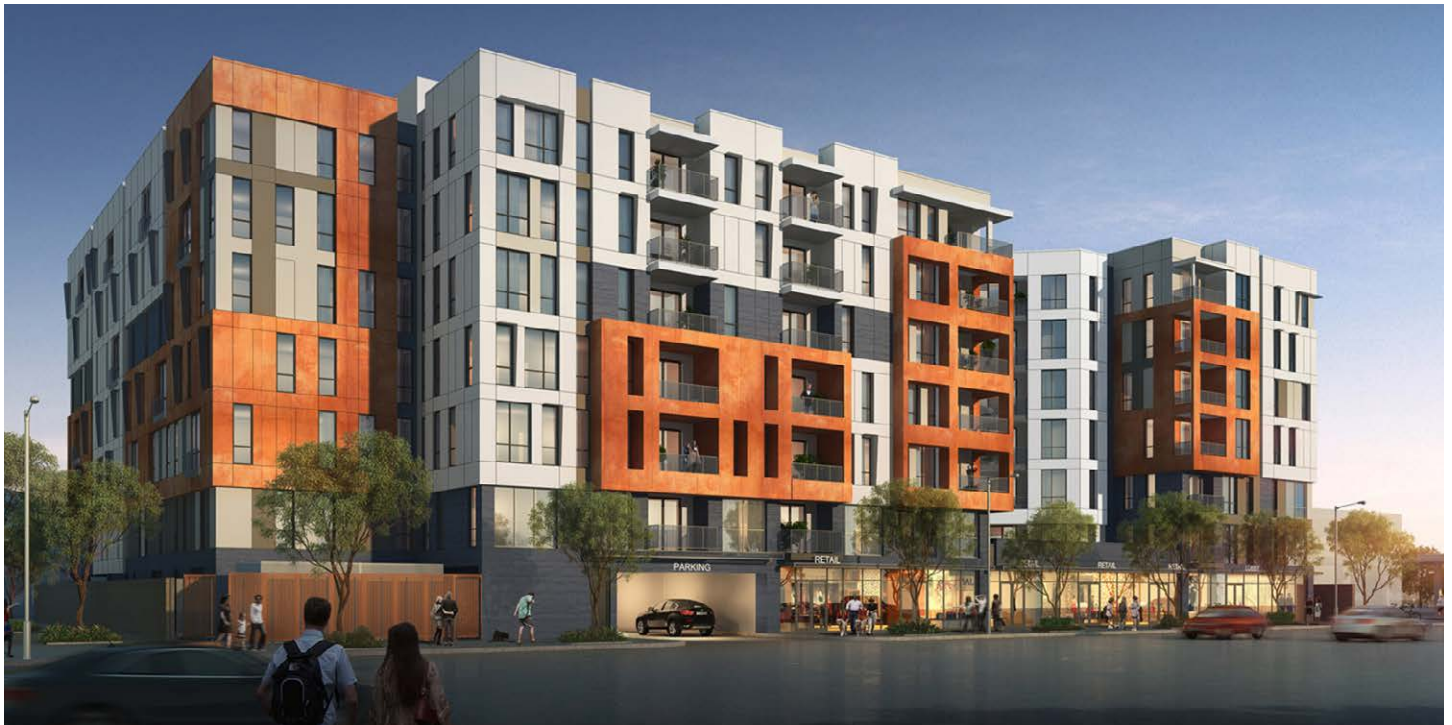


4632 SANTA MONICA BOULEVARD

Client: Jamison Properties
 Location: Los Angeles, CA
 Product Type: Mixed Use Residential and Retail –
 Services: Architecture
 Construction Type: 5 Stories Type III over Type I Residential
 Over On Grade and Subterranean Parking

Total Units: 177
 Site Size: 0.90 Acres
 Density: 196 du/ac
 Retail: 5,500 sf



This seven-story apartment building is designed to fully utilize the tight urban infill site. A Mondrian inspired facade reduces the sense of scale and the contemporary architecture plays with hierarchy, articulation, color and the introduction of Juliet balconies to scale down the mass of the structure.

The building wraps around a central courtyard on the six residential floors. Visible from the street, the courtyard also provides a surprise break in the facade. Residents will also enjoy a fitness center, clubroom and co-working spaces as well as a roof deck with lounge areas and grilling stations.