

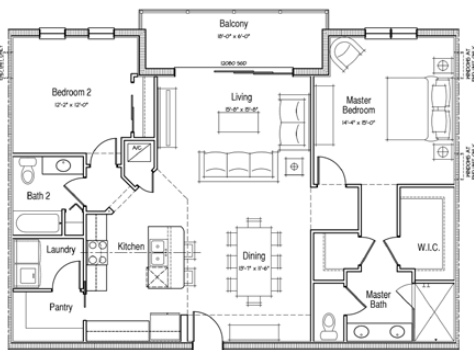
VICTORIA PLACE

Client: JMC Communities
 Location: Dunedin, FL
 Product Type: Mixed Use Retail and Condominiums
 Services: Architecture
 Total Residential Units: 30
 Unit Size: 1,416 sf to 2,244 sf

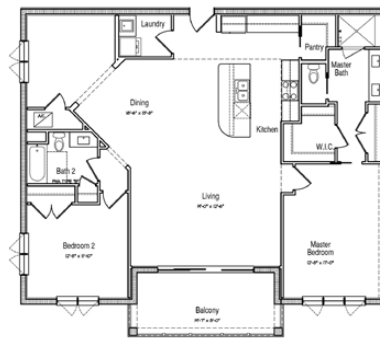
Site Size: 1.27 Acres
 Density: 24 du/ac
 Retail: 6,389 sf



Nestled on the shore of Clearwater Harbor, charming Victoria Place in Tampa Bay's historic hamlet of Dunedin sits on a long-vacant lot on Main Street. The mixed use building has the charm of old Florida coastal architecture and features a standing seam metal roof. Thirty luxury condominiums offer rare water views and are set above boutique-style retail space. Residents can gather in the plaza courtyard, lobby and dog walk area, and a sculpture garden features local artists' work. Each residence boasts a spacious outdoor covered terrace, an open floor plan, large primary suite, designer kitchen and two or three bedrooms.



Unit E - 1416 sq. ft.



Unit D - 1784 sq. ft.



Unit C - 1805 sq. ft.

