

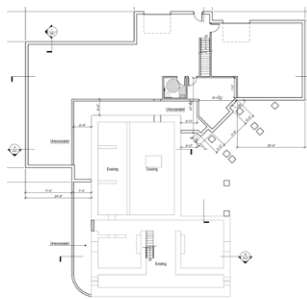
GREYSON ON 27 CLUBHOUSE

Client: Hills Properties
 Location: Nicholasville, KY
 Product Type: Clubhouse Renovation for Multifamily Community
 Services: Architecture
 Size: 4,684 sf

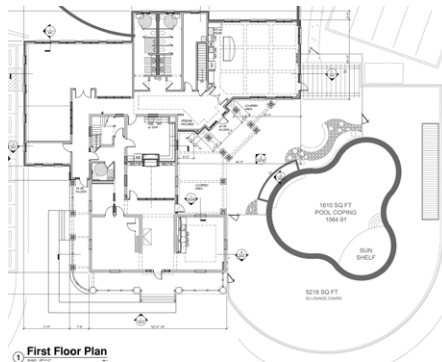


Greyson on 27 is located on land owned by Daniel Boone’s son and once occupied by the icon himself. BSB Design took the challenge of repurposing the original 125-year-old home into an iconic clubhouse for the multifamily rental community. The distinctive columns of Greek revival style remained a defining element for the clubhouse with pre-Civil War roots.

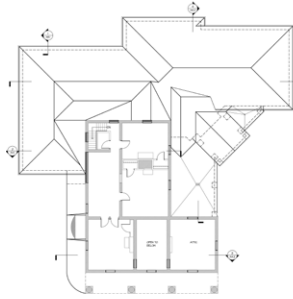
The square footage was expanded to allow for a range of amenities including a coffee bar, resident retreat and fitness center. Surrounding the clubhouse are townhomes and apartments also designed by BSB Design. The community is all connected with sidewalks for easy access to the clubhouse from all units.



Basement Floor Plan



First Floor Plan



Second Floor Plan

