

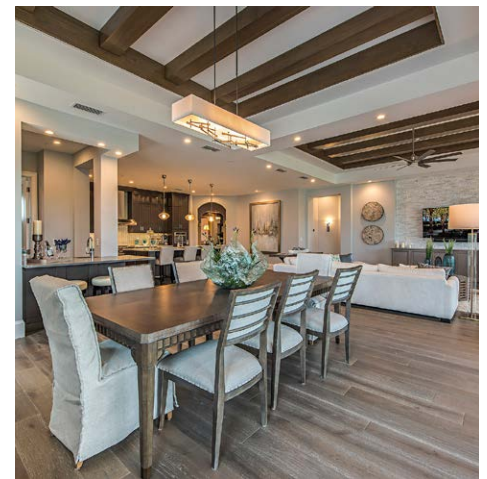
CORSICA AT TALIS PARK

Client: FrontDoor Communities
 Location: Naples, FL
 Product Type: 55+ For Sale Stacked Flats
 Services: Architecture

Total Units: 64
 Unit Size: 3,000 sf to 4,500 sf
 3 Bedrooms
 3.5 Bathrooms
 2-Car Garages



Located on a large golf course development, Corsica at Talis Park was designed to appeal to both retirement and seasonal buyers. The Spanish Mission style contains articulated ironwork details and various recessed elements for visual texture and animation. The multifamily building looks more like a large custom home, with individual units delineated by pergola-covered gated entries. The floor plan was designed to ensure views weren't blocked by stairs or elevators, and large windows and high ceilings further enhance the views.



Unit A – Main Floor



Unit B – Upper Floor