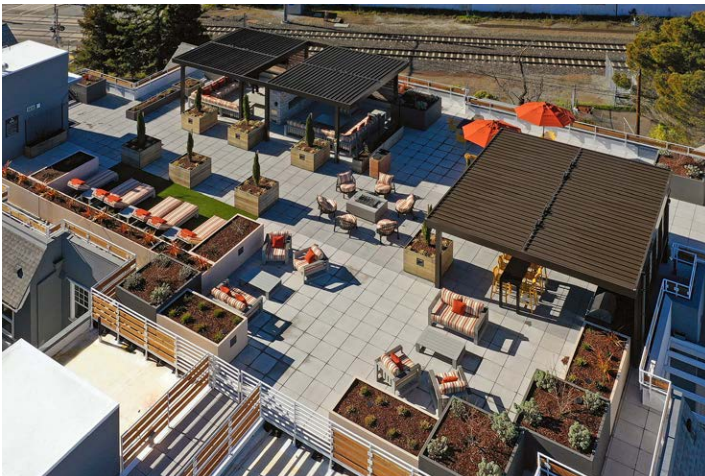


BAYSWATER

Client: Fore Property Company
 Location: Burlingame, CA
 Product Type: Multifamily Market Rate – Podium
 Services: Architecture, Land Planning
 Construction Type: Type V over 2 Levels of
 Type I Subterranean Garage

Total Units: 128
 Site Size: 1.2 Acres
 Density: 106.6 du/ac



Situated on an odd corner facing a transit station and rail line and surrounded by both single family and multifamily residences, Bayswater leverages its location to create an open plaza entry and central courtyard for the surrounding residences. The four-story, 128-unit market rate apartment development features studios, one-, two- and three-bedroom market-rate apartments. An impressive amenities package includes an expansive rooftop deck with barbecue grilling areas and fire pits, a 24-hour fitness center, a community room with a kitchen, a pet grooming station and dog park alongside subterranean parking. Designed to complement the small town feel of Burlingame, the architecture is a contemporary expression of more traditional residential styles.