

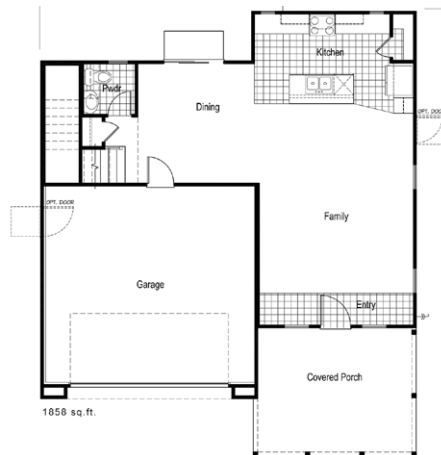
FARMHOUSE AT WILLOW CREEK

Client: BlackPine Communities
 Location: Folsom, CA
 Product Type: Single Family Homes
 Services: Architecture
 Total Units: 126
 Unit Size: 1,858 to 2,409 sf

Site Size: 18.8 Acres
 Density: 6.7 du/ac



These modern farmhouses are beautifully designed with four different floor plans to fit any lifestyle, from families to professionals. The community theme extends to individual homes, with carefully executed architectural details like board and batten siding, standing seam metal roofs, brackets and distinct roof lines. The homes offer spacious first floor layouts focused on entertaining. Bedrooms are upstairs, along with a loft area for extra gathering space.



Plan 1 – Main Floor



Plan 1 – Upper Floor