

FARMHOUSE AT WILLOW CREEK

BLACKPINE COMMUNITIES | FOLSOM, CA

Single Family Homes

Total Units: 126

Unit Size: 1,858 sq. ft. to 2,409 sq. ft.

Unit Width: 38 ft.

Unit Depth: 46 ft. to 52 ft.

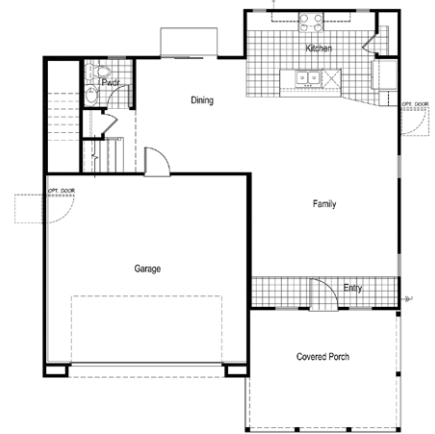
Site Size: 18.8 Acres

Density: 6.7 du/ac



BSB
DESIGN

BSBDESIGN.COM



PLAN 1 – MAIN FLOOR



PLAN 1 – UPPER FLOOR

